

The Latimore Company, LLC

Predictable, Efficient and Collaborative

Community Land Use and Permit Processing

Latimorecompany.com

Establishing a Streamlined Permit Review Cycle

The Integrated Review Cycle

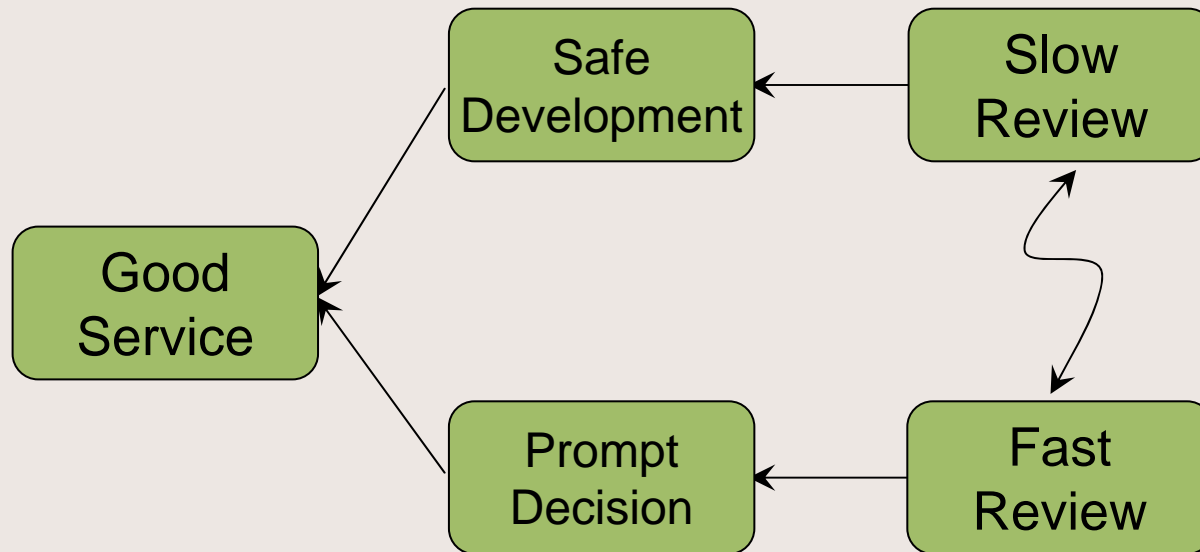
Kurt Latimore

APA National Conference

Boston, Massachusetts

April 10, 2011

The Dilemma



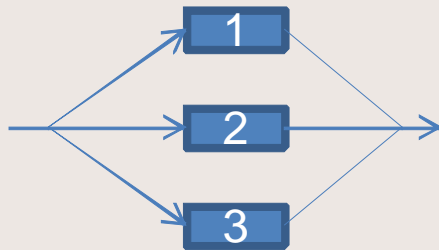
- How do we provide thorough reviews and prompt decisions?

Thorough or Prompt?

Sequential

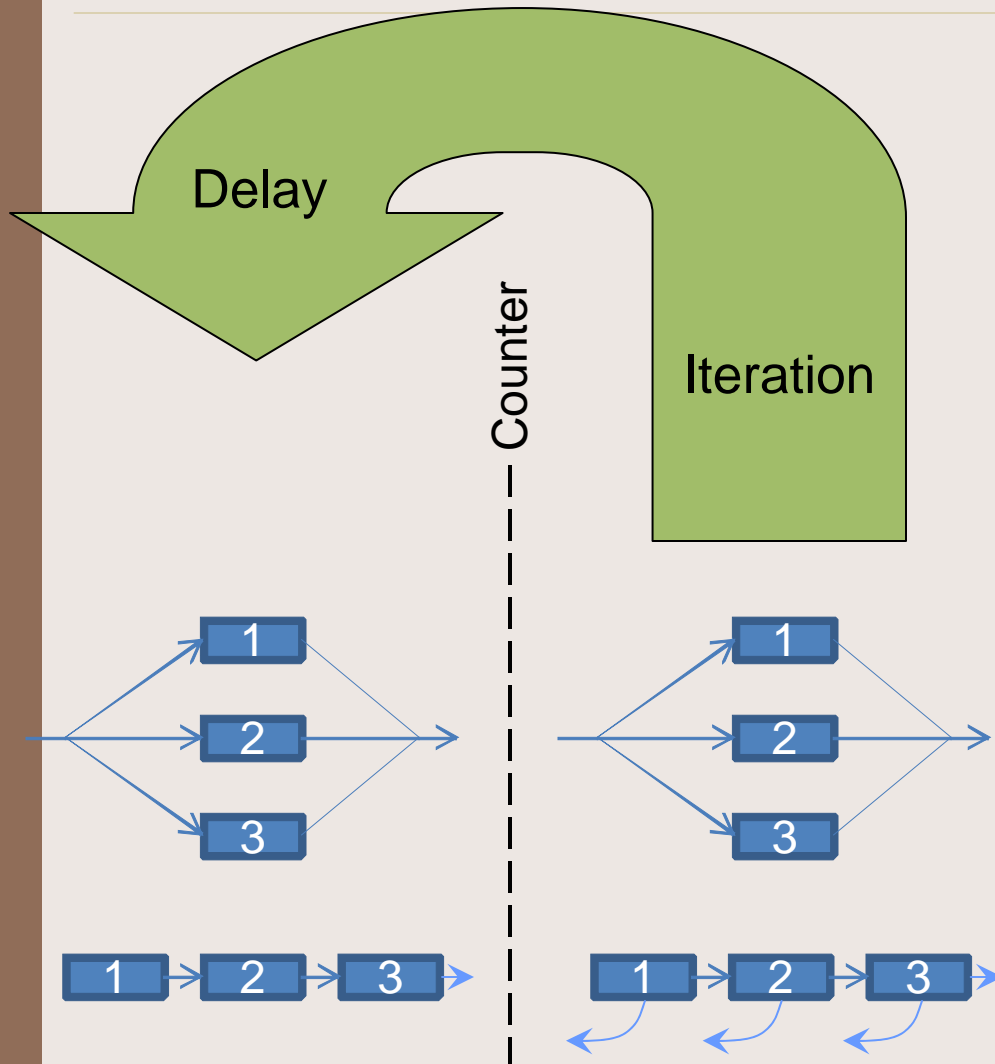


Parallel



- For more thorough reviews, we tend to add specialists in the various codes
- This adds time if the review is sequential
- This adds complexity if the review is in parallel (concurrent)

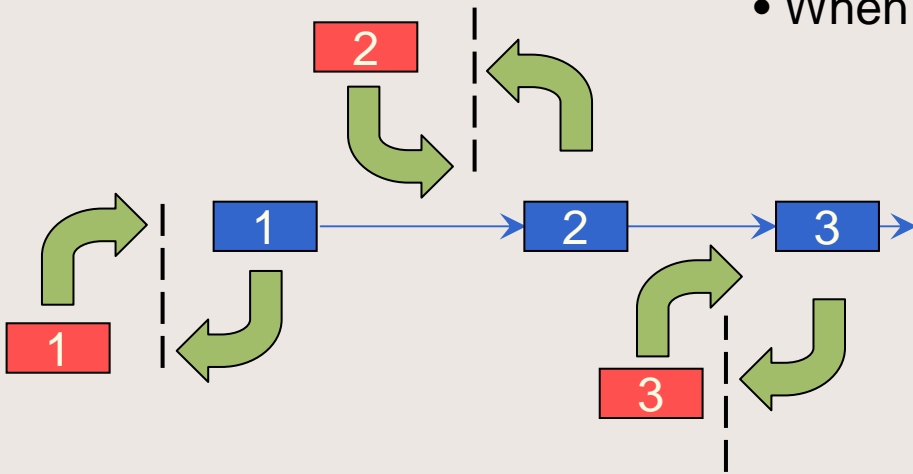
The Plot Thickens



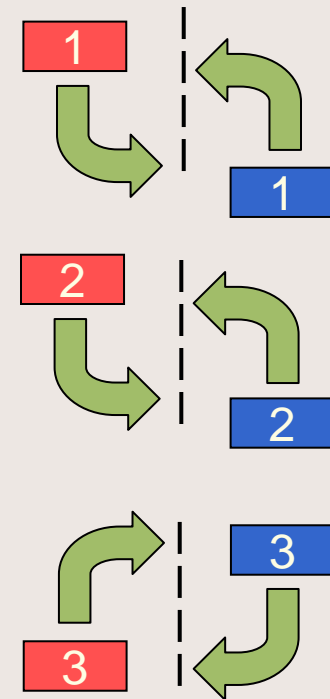
- The applicant has the same problem
- Both sides of the counter break the design into code specialty pieces, parallel or sequential
- High probability of breakdown, iteration and delay

Delays and Potential Gaps

- What if Changes invalidate each other?
- Just what configuration are we approving?
- When are we done?

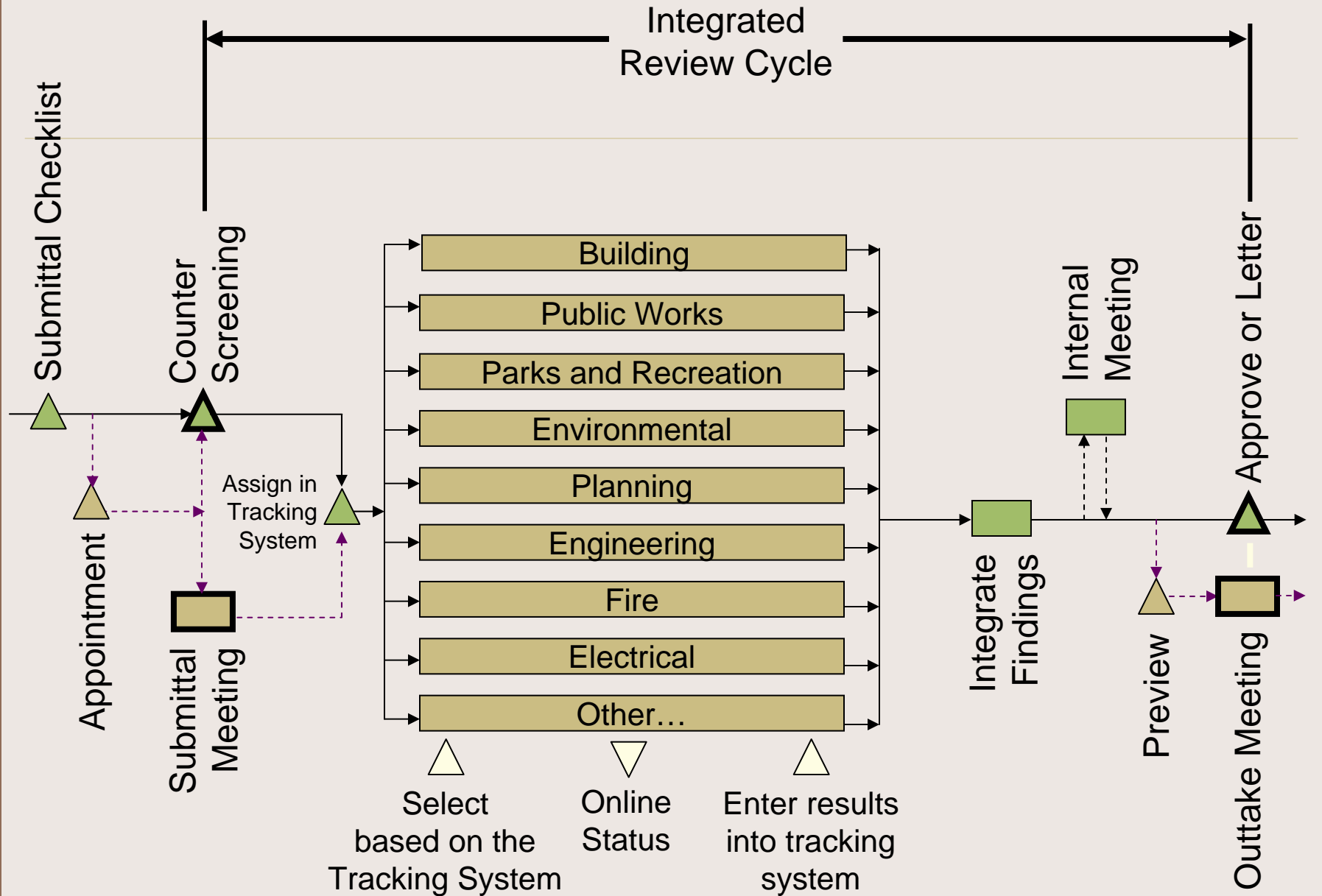


- What if Changes 2 or 3 invalidate Change 1?
- To the applicant this looks like a “moving target”
- Takes a long time

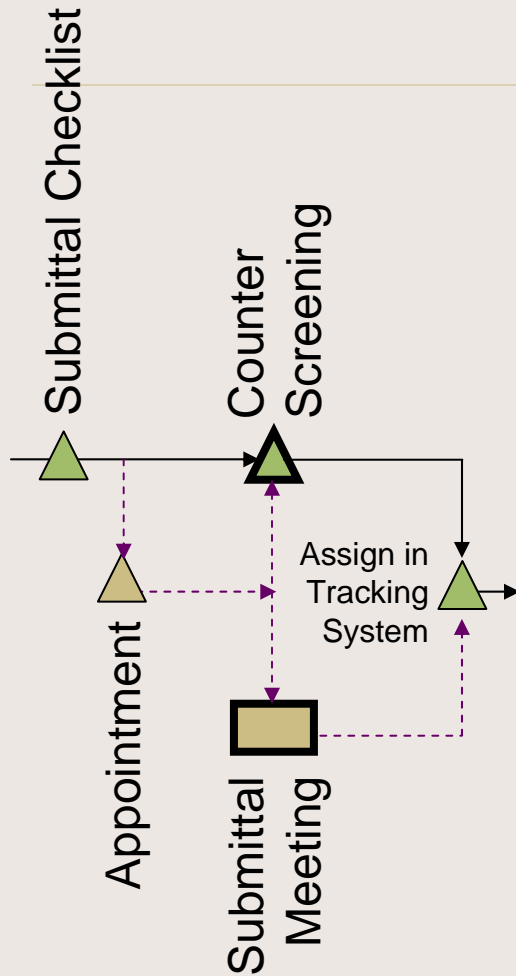


The Integrated Review Cycle

- The thoroughness of multiple reviewers
- The speed of parallel review
- Made possible by:
 - Submittal screening (a complete application)
 - Integration of review findings and instructions (a complete review)
 - Revision screening (a complete revision)
 - A good control system (who's it)

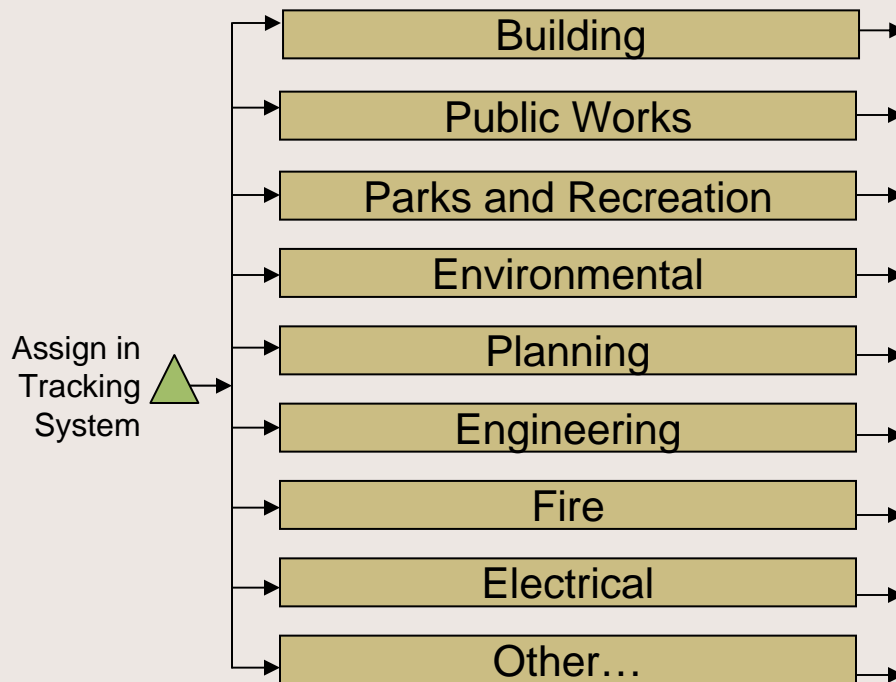


1. Submittal Screening



- Published submittal checklists
- Informal counter support
- Pre-application meeting option
- Real-time screening at submittal
- The Integrated Review Cycle starts when screening is successful

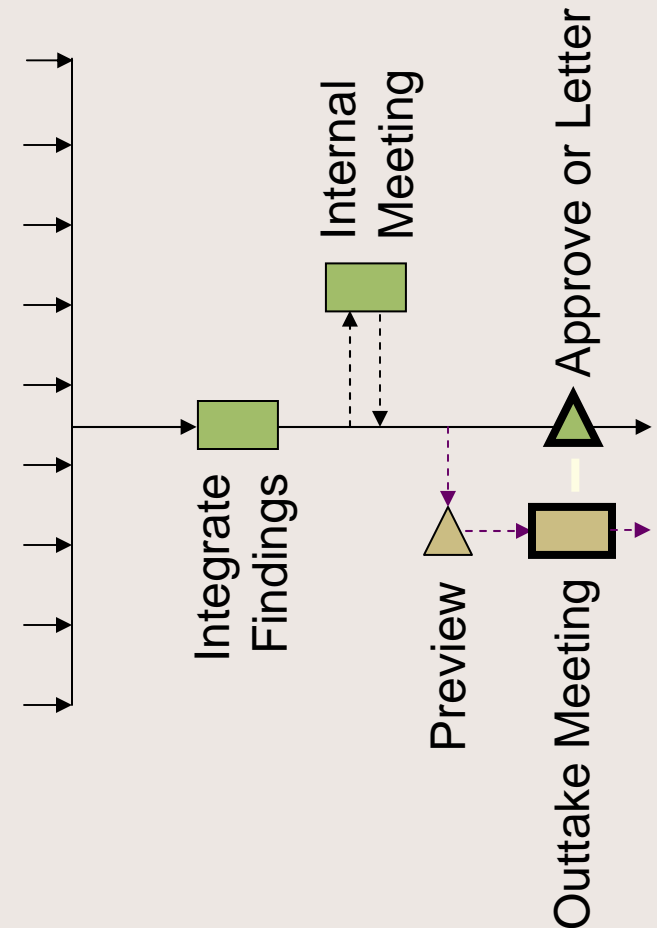
2. Thorough, Parallel Review



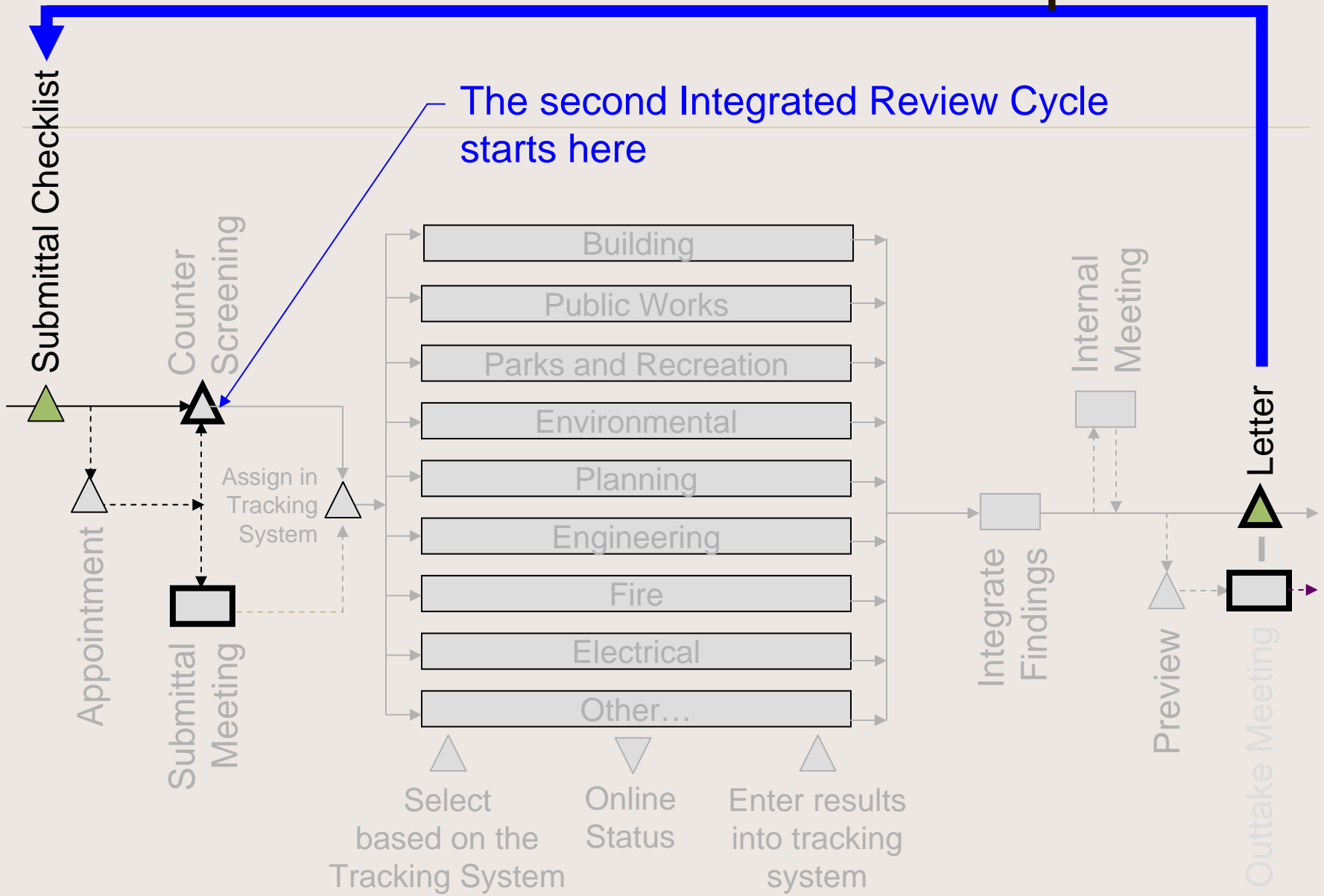
- Assigned personnel conduct their reviews
- Review checklists add consistency
- Evaluate plans fully
- Build a list of any required corrections
- Transmit corrections list or any conditions to the *integrator*

3. Integrate and Explain Findings

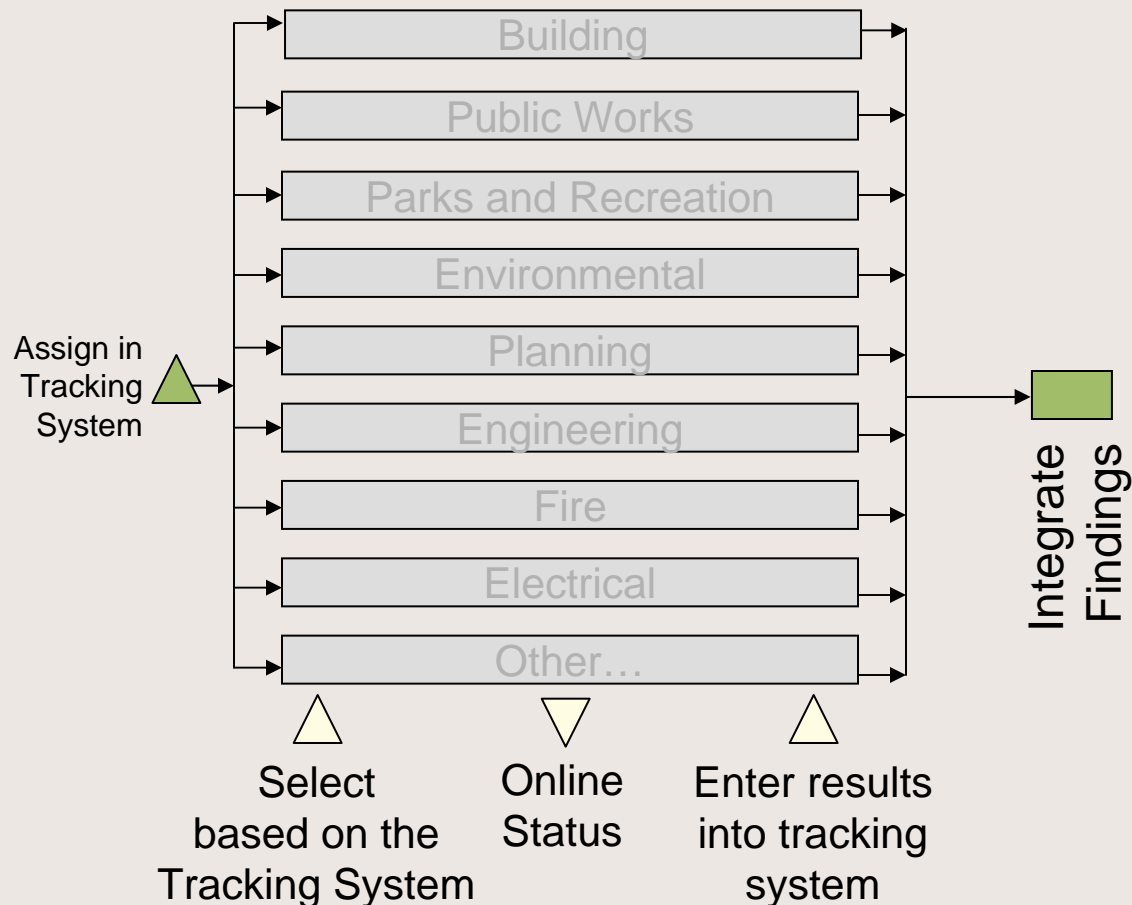
- Integrator combines the findings:
 - Removes overlaps, duplicates
 - Resolves any conflicting instructions
 - Calls a reviewer meeting to resolve any complex issues
- Document is released to the applicant
 - Sent to the applicant if straightforward
 - Explained in a meeting if complex
 - The Integrated Review Cycle ends here
- This document becomes the submittal checklist for the revision



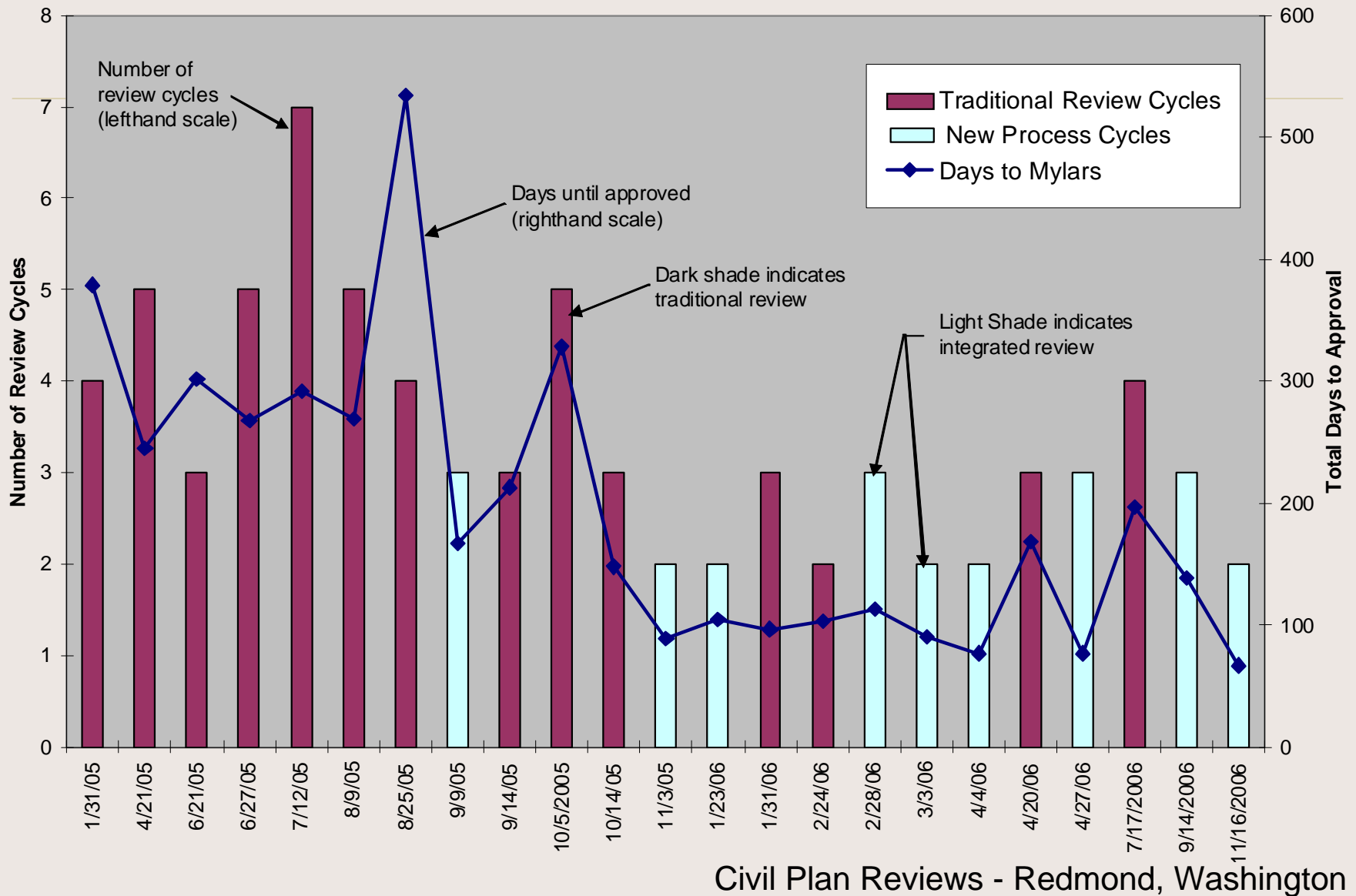
4. Revisions Must be Complete



5. A Good Control System

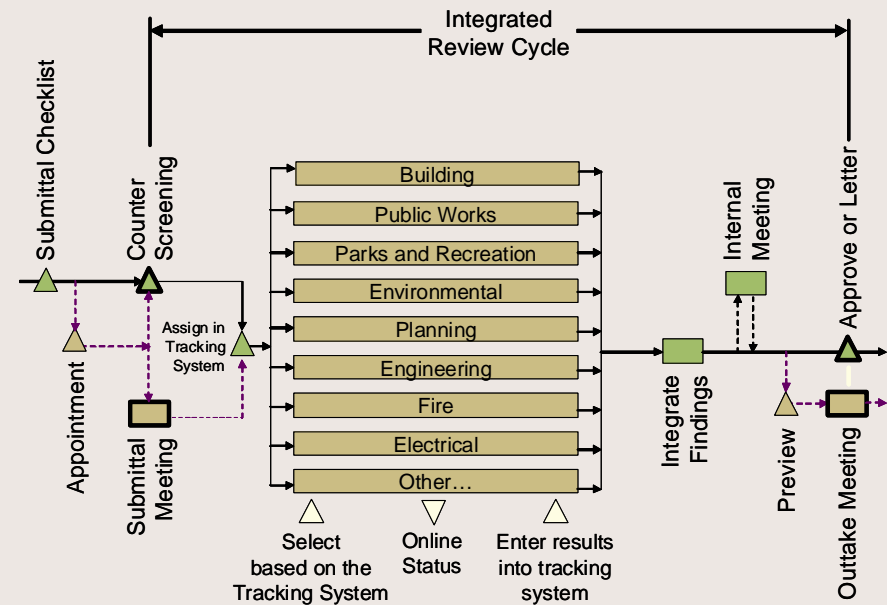


The Results



Integrated Review Cycle

- Submittal screening (complete application)
- Thorough, parallel, and prompt review
- Integration of review findings, instructions (a complete review)
- Revision screening (a complete revision)
- A good control system (who's it)



The Latimore Company, LLC

11805 Ingraham Road
Snohomish WA 98290
(360) 805-2999